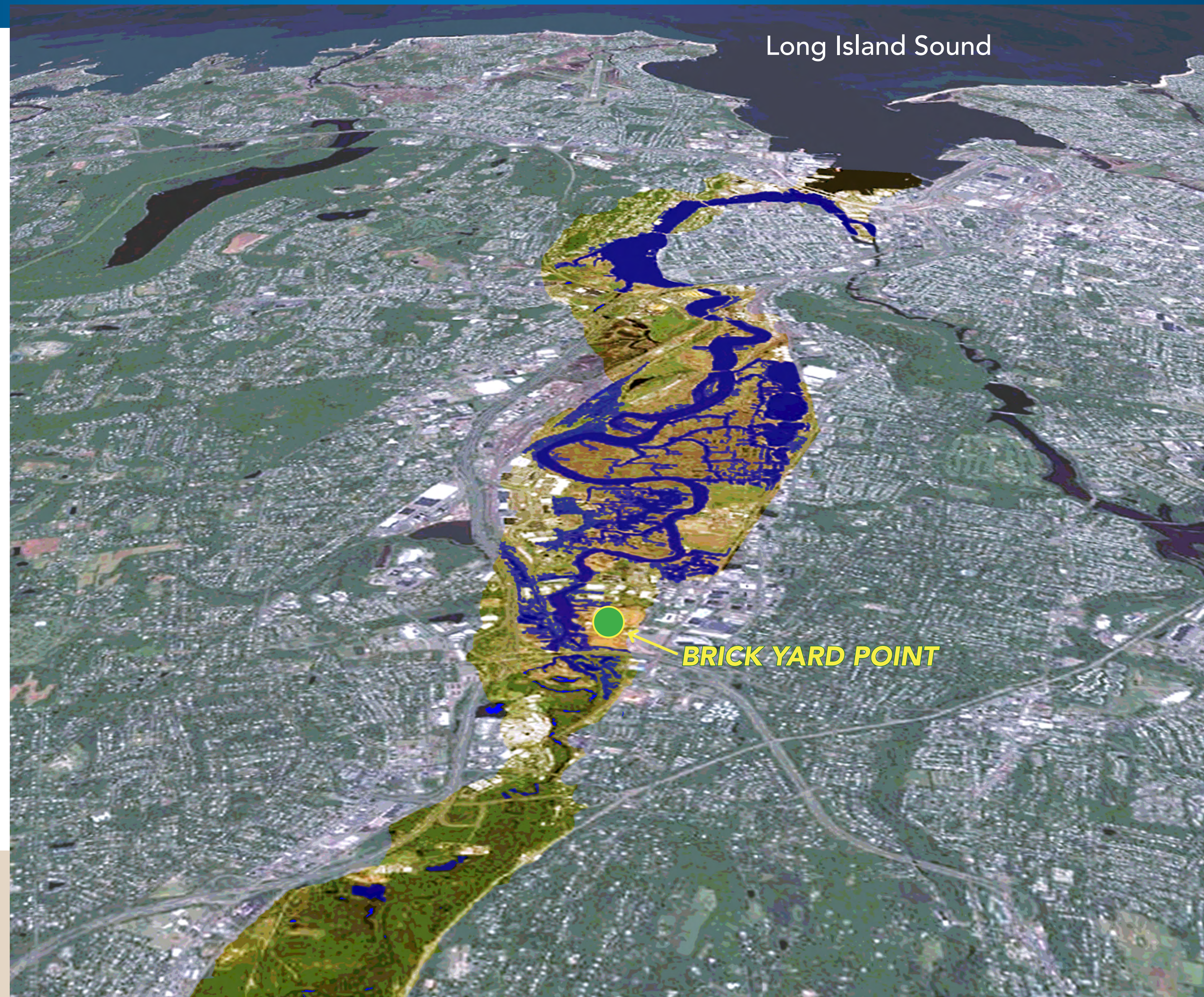


Our Place in the Region

SOUTH OVERLOOK

Restoration of Brick Yard Point reconnects swamp forests of the upper Quinnipiac region to tidal marshes to the south.



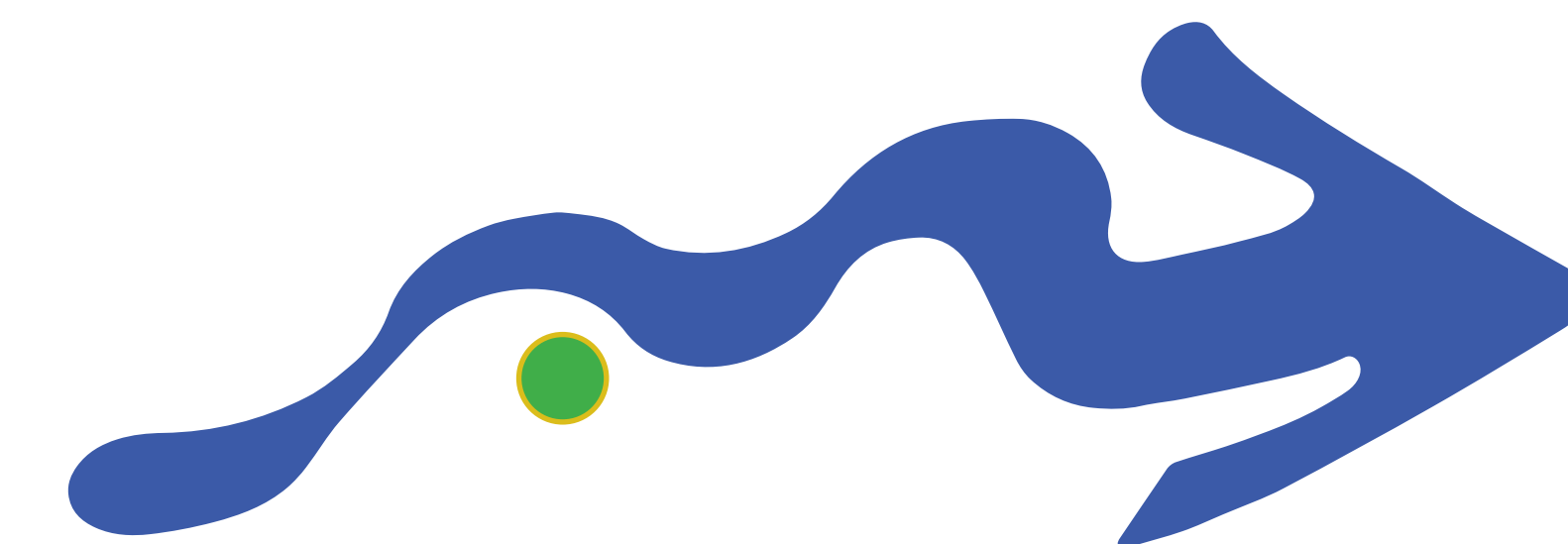
The Quinnipiac River runs 45 miles from Farmington to New Haven Harbor, with a drainage area of approximately 165 sq. mi.

Its name "Quinnipiac" comes from an Algonquian phrase for "long water land," given to the river and area around its mouth, now Greater New Haven.

The river contains the fourth largest estuary in Connecticut, rich in biological diversity and popular for kayaking and bird watching.

Brick Yard Point is among the former industrial areas of the northeast being restored.

Brick Yard Point's wetlands and meadows restore a link in the wildlife corridor and habitats along the Quinnipiac River.



Long Island Sound

Bird's eye view of Quinnipiac River to New Haven Harbor and Long Island Sound

