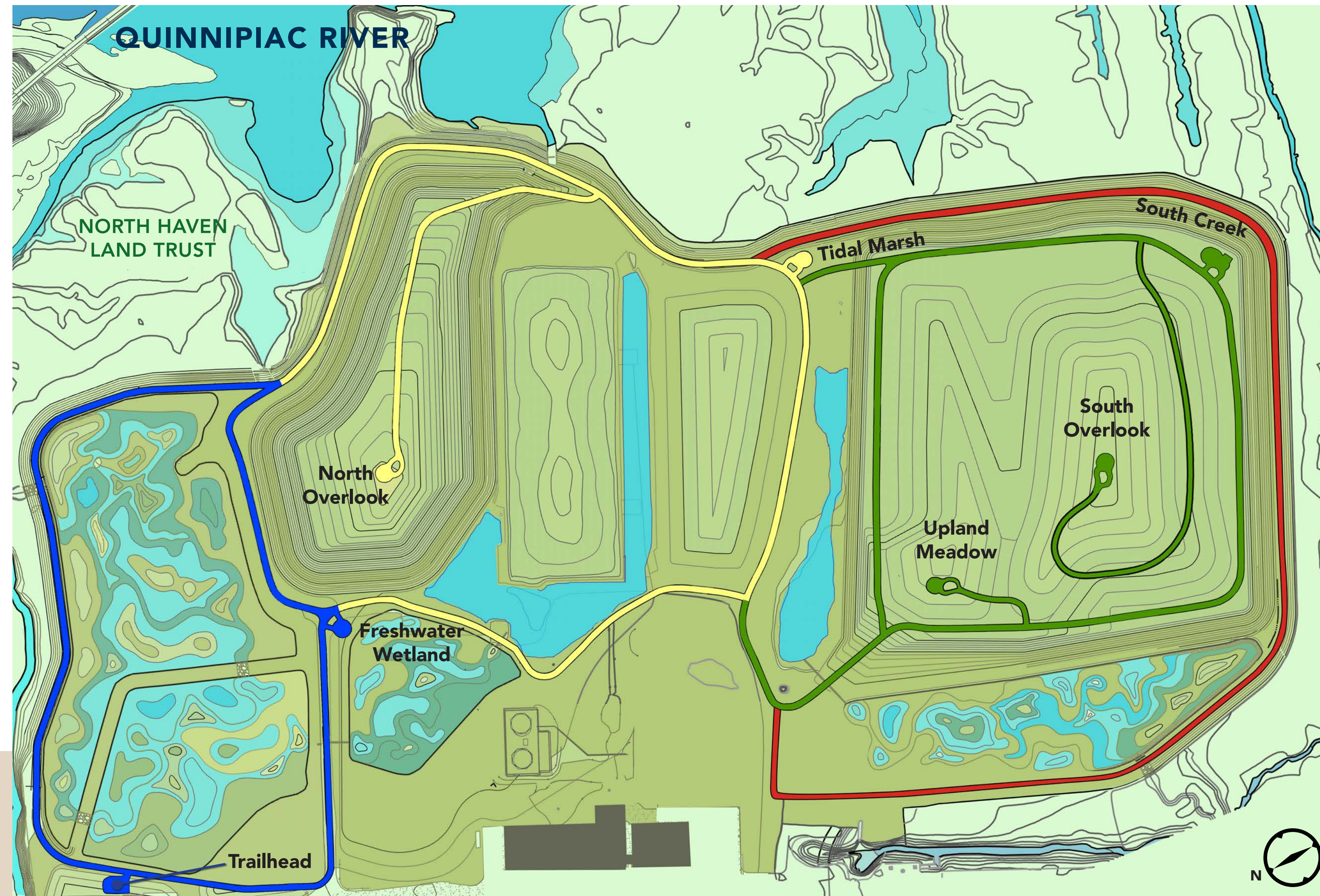
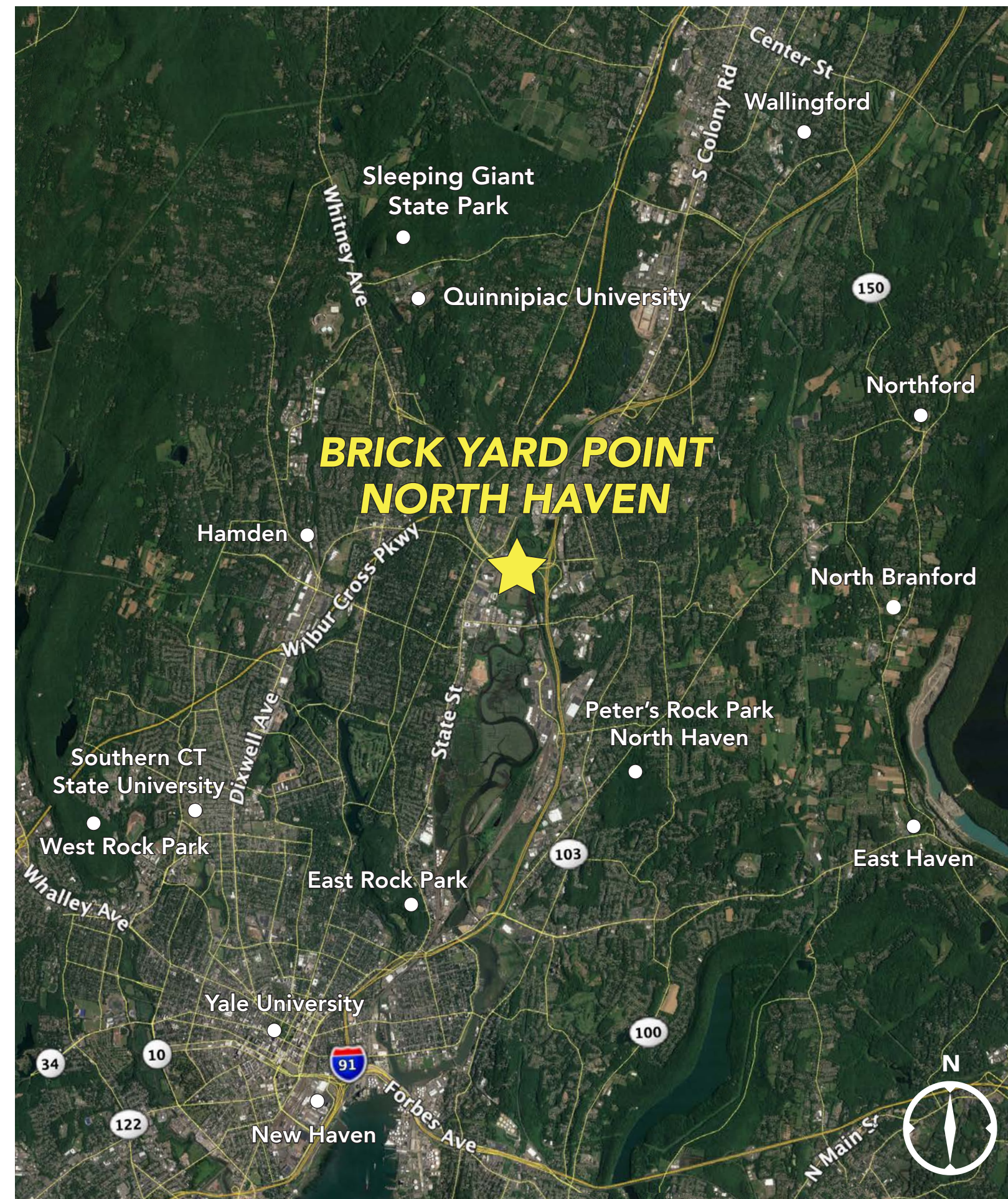


Welcome to Brick Yard Point

Ecological restoration of Brick Yard Point reconnects natural systems along the Quinnipiac River.

TRAILHEAD



YOU ARE HERE

- BLUE TRAIL**
Approx. 1/3-mi. loop along the restored freshwater wetlands and adjacent to our North Haven Land Trust neighbor.
- YELLOW TRAIL**
1/2-mi. walk with views of tidal marshes along the Quinnipiac River reaching the North Overlook.
- GREEN TRAIL**
Just over 1/2-mi. walk along the upper bank overlooking South Creek reaching the Upland Meadow and South Overlook.
- RED TRAIL**
Just under 1/2-mi. walk along the lower edge of South Creek.
- LEARNING AREAS**

Brick Yard Point is located within the lower reaches of the Quinnipiac River at the transition between swamp forests to the north and tidal wetlands to the south.

